

DOUCHE OCULAIRE / FACIALE AXION® MSR
MONTÉE SUR PLATEFORME

AXION® MSR DECK MOUNT EYE / FACE WASH

FONCTIONNALITÉS ET AVANTAGES /
FEATURES & BENEFITS

EYE/FACE WASH HEAD :

AXION® MSR eye/face wash head uses an inverted directional laminar flow to sweep contaminants away from the vulnerable nasal cavity.

VALVE :

Valve is designed so full continuous flow occurs with the simple squeeze of a lever providing an easy start to the irrigation process.

HOSE :

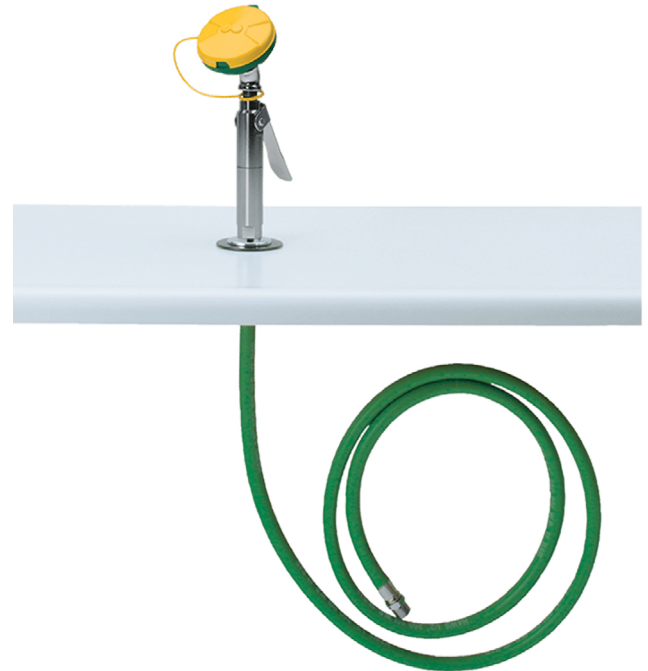
The 8' (243.8 cm) swivel hose delivers a wide coverage area and is pressure rated at 250 psi (17.2 bar) to further optimize durability.

MOUNTING :

Counter-mounted design provides a practical and space efficient piece of emergency equipment.

SAFETY :

8" x 10-3/4" (20.3 x 27.3 cm) universal emergency sign make the unit easily detected in an emergency. Test card to record weekly checks helps maintain the unit's best working quality.



OPTIONS

Thermostatic Mixing Valve :

Model EU-9201EW AXION® Emergency Tempering Valve thermostatically mixes hot and cold water to provide a safe fluid supply for a single emergency eye/face wash, with a flow rate of 10 gpm (38.8 L).

Emergency Alarm System :

Model EU-9001.5, 1/2" 120 VAC emergency alarm and light system. Buzzer and flashing light are activated by a 1/2" IPS double pole, double throw flow switch.

Thermostatic Mixing Valve :

Model EU-9201EFE AXION® Emergency Tempering Valve thermostatically mixes hot and cold water to provide a safe fluid supply for a single emergency eye/face wash, with a flow rate of 12 gpm (38.8 L).

Vacuum Breaker :

Model EU-SP-212 is a chrome-plated brass vacuum breaker.

CARACTÉRISTIQUES / SPECIFICATIONS

Model EU-8904-AXION counter-mounted eye/face wash and body spray shall include an AXION® MSR eye/face wash head which features an inverted directional laminar flow which achieves "Zero Vertical Velocity" supplied by an integral 3.7 gpm flow control. The unit shall also include a chrome plated brass stay-open squeeze lever valve, 8 foot (243,8 cm) 250 psi (17,2 bar) green hose with chrome-plated swiveltting at one end, Noryl plastic deck flange with integral key slot for proper positioning of unit, universal sign, and 1/2" NPT inlet. In order to comply with state codes the use of a vacuum breaker is required with all hand held eye/face wash body spray units (Haws offers model EU-SP-212)

UTILISATIONS / APPLICATIONS

Perfect for the environment where safety is of the utmost importance and an extended coverage area may be needed. When installed properly, the functionally constructed, deck mounted design is space efficient.

Model EU-8904-AXION is certified by CSA to meet the ANSI/ISEA Z358.1 Standard for Emergency Eyewash and Shower Equipment.



NOTE TO INSTALLER :

Please leave this information with the Maintenance Department.

LIMITED WARRANTY :

HAWS warrants that this specific product is guaranteed against defective material or poor workmanship for a period of one year from date of shipment. HAWS liability under this warranty shall be discharged by furnishing without charge F.O.B. HAWS Factory any goods, or part thereof, which shall appear to the Company upon inspection to be of defective material or not of first class workmanship, provided that claim is made in writing to Haws within a reasonable period after receipt of the product. Where claims for defects are made, the defective part or parts shall be delivered to the Company, prepaid, for inspection. HAWS will not be liable for the cost of repairs, alterations or replacements, or for any expense connected therewith made by the owner or his agents, except upon written authority from HAWS, Sparks, Nevada. HAWS will not be liable for any damages caused by defective materials or poor workmanship, except for replacements, as provided above. Buyer agrees that Haws has made no other warranties either expressed or implied in addition to those above stated, except that of title with respect to any of the products or equipment sold hereunder and that HAWS shall not be liable for general, special, or consequential damages claimed to arise under the contract of sale.

The emergency equipment manufactured by HAWS is warranted to function if installation and maintenance instructions provided are adhered to. The units also must be used for the purpose for which they were intended. This product is intended to supplement first-aid treatment. Due to widely varying conditions, Haws cannot guarantee that the use of this emergency equipment will prevent serious injury or the aggravation of existing or prior injuries.

NO OTHER WARRANTIES EXPRESSED OR IMPLIED ARE AUTHORIZED, PROVIDED OR GIVEN BY HAWS.

SHOULD YOU EXPERIENCE DIFFICULTY WITH THE INSTALLATION OF THIS MODEL PLEASE CALL :

TECHNICAL SUPPORT AND CUSTOMER SERVICE : +33 1 44 25 03 90

LOCATION OF UNIT : The Model EU-8904-AXION Hose Spray should be installed in close proximity to potential accident areas. It should be clearly identified free from obstructions and easy to access. In order to comply with state codes, the use of a vacuum breaker is required with all hand held eye/face wash and body spray units (Haws offers Model EU-SP-212).

SUPPLY LINE : The minimum recommended line size is 1/2" IPS with 30-90 psi (2-6 ATM) flowing pressure. Where sediment or mineral content is a problem, an inlet filter is recommended.

PLUMBING CONNECTIONS : Inlet supply is female 1/2" NPT.

TROUBLESHOOTING	
PROBLEM	REPAIR CHECKLIST
1. No flow	1a. Check the main shut-off valve.
2. Insufficient water flow	2a. Verify minimum 30 psi (2 ATM) flowing supply line pressure. 2b. Probable clogging of flow control due to inadequate line flushing. Unscrew eye/face wash head and remove the four screws to disassemble the head. Clean flow control and reassemble head. See EU-SP-65 Installation Drawing for details.

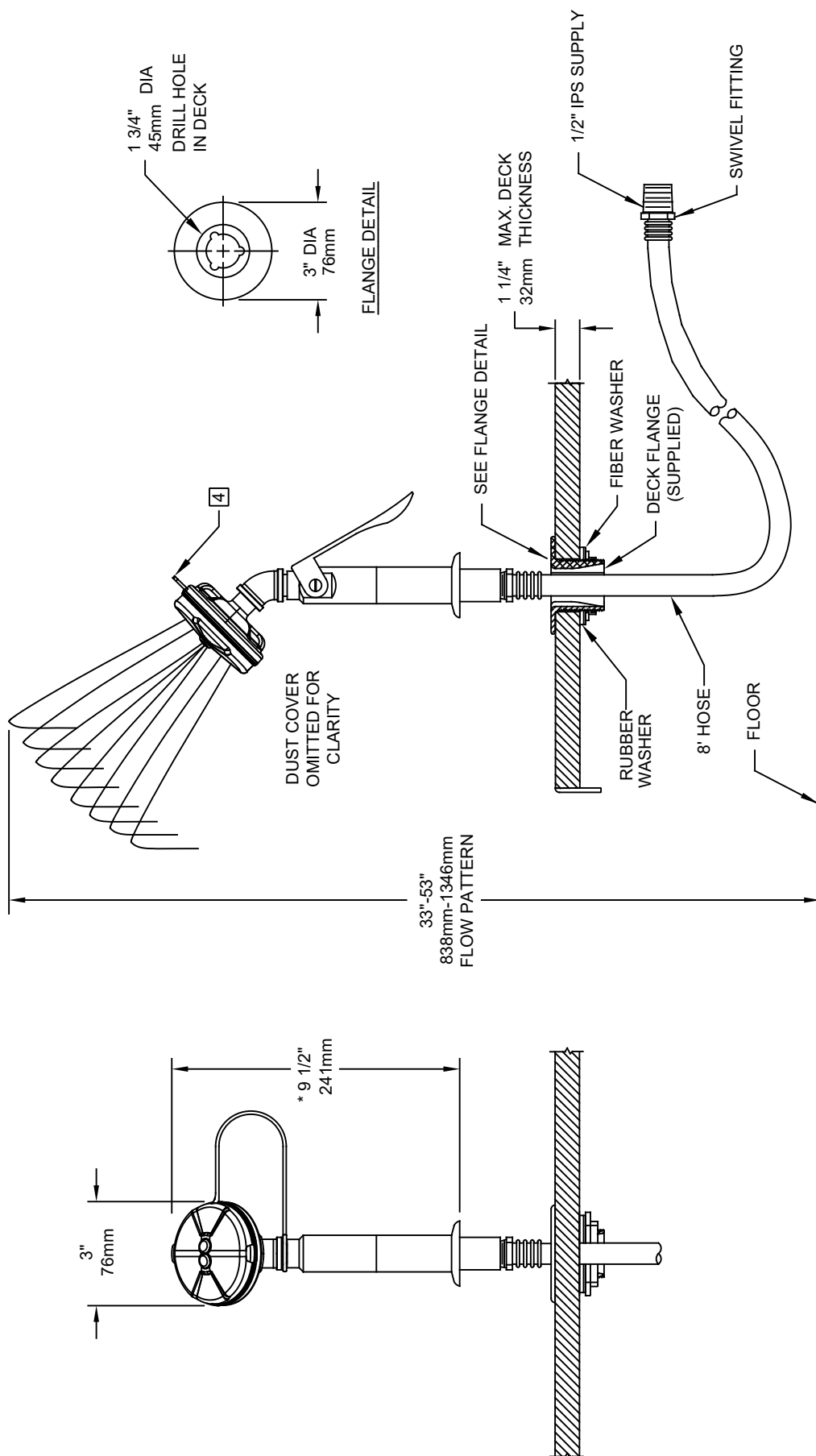
INSTALLATION INSTRUCTIONS :

Refer to installation drawing to clarify installation procedure.

STEP 1 : Assemble eye/face wash assembly to hose, orient tab on assembly away from user.

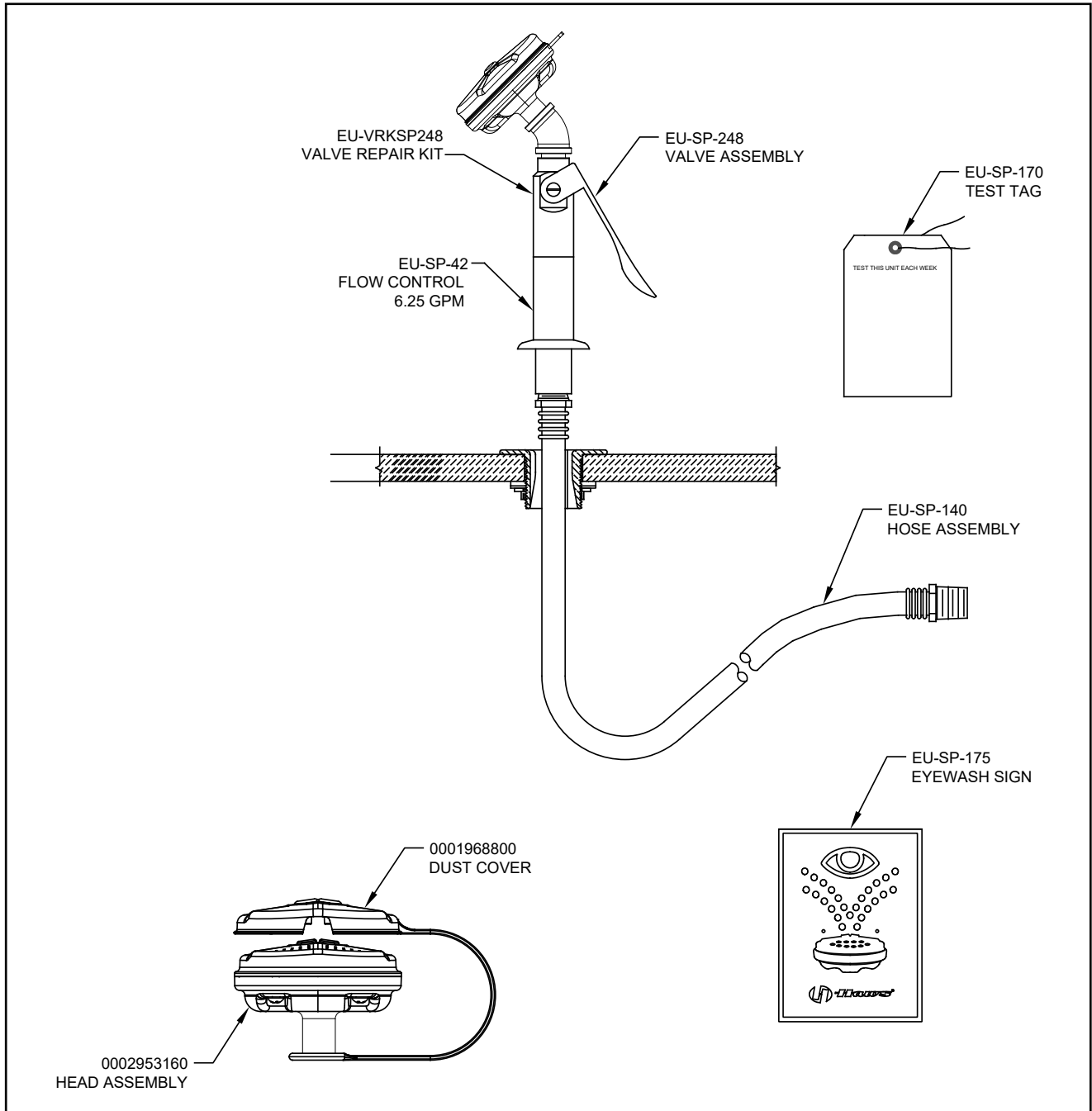
For more information about Haws products, see our website: www.anox.fr

Date de révision du document : 28 mai 2024 - Avis de non-responsabilité : Les améliorations continues du produit font que les spécifications peuvent être modifiées sans préavis. Document et photos non contractuelles. May 28, 2024 - Disclaimer: Continued product improvements make specifications and measurements subject to change without notice. Non-contractual document.



NOTES:

1. WHEN INSTALLING THIS UNIT, LOCAL, STATE, OR FEDERAL CODES SHOULD BE ADHERED TO FOR INSTALLATION DIMENSIONS (LOCATIONS), WASTE AND SUPPLY REQUIREMENTS OTHER THAN SHOWN.
2. TO COMPLY WITH ANSI Z358.1-2014 FOR EMERGENCY EYEWASH OR EYE/FACE WASH: EYEWASH OR EYE/FACE WASH SHALL BE POSITIONED SUCH THAT FLUSHING FLUID PATTERN IS NOT LESS THAN 33" (838 mm), NO GREATER THAN 53" (1346 mm) FROM SURFACE ON WHICH USER STANDS, AND 6.0" (153mm) MINIMUM FROM WALL OR NEAREST OBSTRUCTION.
3. IN ORDER TO COMPLY WITH STATE CODES, THE USE OF A VACUUM BREAKER IS REQUIRED WITH ALL HAND HELD EYE/FACE WASH AND BODY SPRAY UNITS (HAWS OFFERS MODEL EU-SP-212).
4. ASSEMBLE EYE/FACE WASH ASSEMBLY AND DUST COVER TO HOSE; ORIENT TAB ON ASSEMBLY, AWAY FROM USER.
5. * DIMENSIONS MAY VARY ± 1/2" (12.7mm).



Date de révision du document : 28 mai 2024 - Avis de non-responsabilité : Les améliorations continues du produit font que les spécifications peuvent être modifiées sans préavis. Document et photos non contractuelles.
May 28, 2024 - Disclaimer: Continued product improvements make specifications and measurements subject to change without notice. Non-contractual document.

Merci de nous indiquer (avant ou au moment de la commande) la référence exacte de la douche installée pour vérifier sa compatibilité avec les pièces détachées choisies.
Please tell us (before or at the time of ordering) the exact reference of the installed shower to check its compatibility with the chosen spare parts.