



COMIMEX

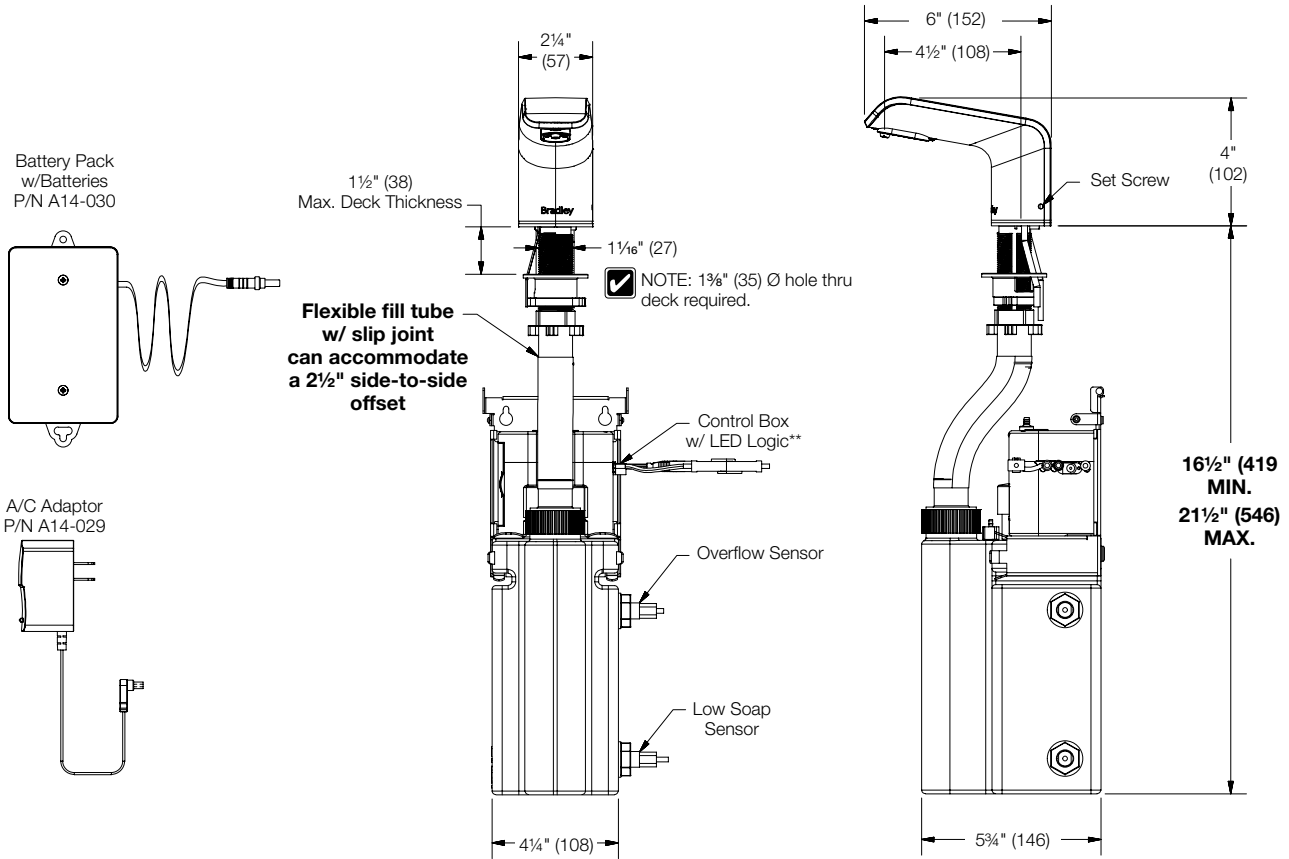
BD-6-3500

Verge™ Deck-Mounted Soap Dispenser – Linea Series

Dimensions – Single Top-Fill

(mm)

Note the dimension tolerances (bolded in the illustration below) before installation. Failure to adhere to these tolerances can cause the dispenser to work improperly.



Verify all rough-in dimensions prior to installation. Consult local and national codes. Conformity and compliance to local and national codes is the responsibility of the installer.

\*\* NOTE: Battery pack or AC adaptor required. AC power source required to be within 54" (1371) of the control box.

Date de révision du document : 11 avril 2023 - Avis de non-responsabilité : Les améliorations continues du produit font que les spécifications peuvent être modifiées sans préavis. Document et photos non contractuelles. April 11, 2023 - Disclaimer: Continued product improvements make specifications subject to change without notice. Non-contractual document.



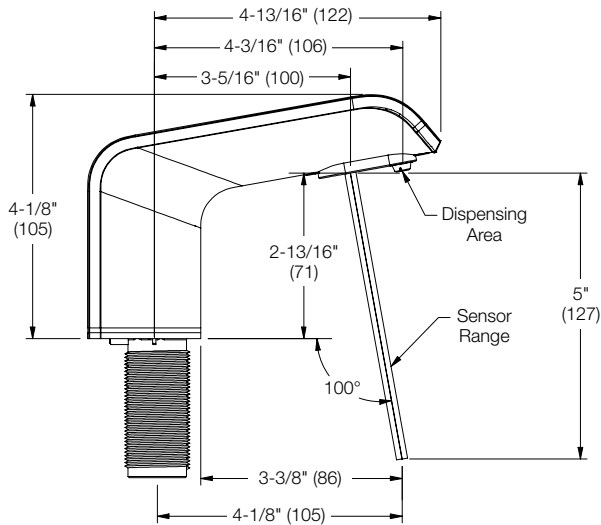
## Operation

Place hands under soap spout and hold for approximately 1.75 seconds. Spout will dispense liquid or foam soap depending on option selected.

- Allows 3 activations per 7.5 seconds.
- Liquid: 0.65 ml to 0.80 ml per activation
- Foam: 0.75 ml (liquid state) to 1.35 ml (foam state) per activation

## Sensor Technology

Infrared sensor with 4–5" (102–127 mm) activation range† that pairs seamlessly with Bradley's faucet dual sensor technology to eliminate false activations and maximize battery life. See Sensing Dimensions diagram.



† A minimum of 5" (127 mm) clearance between the sensor and surface or bowl is needed to ensure proper function of the sensor. For information on specific applications, please contact Bradley Technical Service.

## Indicator Lights

- Power ON (spout location): Flashes red for 1.2 seconds
- Power ON (multi-feed): Flashes green/red 3 times
- Soap dispense activation: Single flash green light
- Low power indication: Continuously flashing green light
- Low soap level: Flashes red when soap level is below 25% capacity
- Overflow condition: Steady red light with audible indication from buzzer lasts 2.5 seconds when fill level reaches 90% capacity

Verify all rough-in dimensions prior to installation.  
Consult local and national codes. Conformity and compliance to local and national codes is the responsibility of the installer.

## Power Source

Choose a power supply that meets your application: (Power source is not automatically included with Verge soap dispensers and must be chosen from the list below.)

- Individual battery pack† – each set of batteries can accommodate up to 140,000 cycles
- Individual AC power adapter option for 120V/230V for use on a single device

Ordered separately:

- AC adapter splitter assembly accommodates up to 4 devices. Use when desired to serve in combination of multiple devices (faucet, soap dispenser, and multi-feed soap tank assembly) and/or stations. (Electrical Plug Type B\*\*\*)

† Quantity (4) D-cell batteries included with battery pack

## Mounting

**Accurate mounting is essential to ensuring proper sensor function and performance.** Verify all rough-in dimensions prior to installation. Shank will accommodate a maximum counter thickness of 1 1/2" (38 mm). Mount dispenser in 1 3/8" (35 mm) diameter hole in lavatory or countertop with a minimum of 5" (127 mm) clearance between the sensor and surface or bowl. To meet sensor range requirements with drop-in or vessel-style basin applications, the dispenser must be mounted on the basin and not on the counter or surface behind the basin.

## Product Materials

- Spout assembly: Chrome-plated cast brass w/ optional in-stock PVD finish
- Control box: ABS plastic
- Battery box: ABS plastic
- Soap tank: Polypropylene

## Soap Specifications

- Non-proprietary bulk soap (select foam or liquid)
- Liquid: Viscosity range of 100-5,000 cPs
- Foam: All-purpose foam hand soaps and antibacterial foam soaps containing PCMX and/or Triclosan

## Vandal Resistance

- Concealed sensor package deters vandalism
- Durable PVD finish is scratch resistant
- Rotation-resistant gasket/washer
- Tamper resistant screw



# BD-6-3500

## Verge™ Deck-Mounted Soap Dispenser – Linea Series

<b>Model</b> <input type="radio"/> <b>BD-6-3500</b> Verge Deck-Mounted Soap Dispenser – Linea Series
<b>Required Selections</b> (must select one from each category) <b>Activation Type</b> (select one) <input type="radio"/> <b>R</b> Infrared Sensor Operation
<b>Soap Type</b> (select one) <input type="radio"/> <b>F</b> Foam <input type="radio"/> <b>L</b> Liquid
<b>Fill System</b> (select one) <input type="radio"/> <b>T</b> Single (Top fill at spout) <input type="radio"/> <b>M</b> <a href="#">Multi-Feed (Shared Tank, Top-Fill Port)</a>
<b>Finish Type</b> (select one) <input type="radio"/> <b>PC</b> Polished Chrome <input type="radio"/> <b>BB</b> Brushed Black Stainless <input type="radio"/> <b>BS</b> Brushed Stainless <input type="radio"/> <b>BZ</b> Brushed Bronze <input type="radio"/> <b>BR</b> Brushed Brass <input type="radio"/> <b>BN</b> Brushed Nickel
<b>Power Supply</b> (select one) <input type="radio"/> <b>A14-029</b> AC Adapter - Electrical Plug Type B <input type="radio"/> <b>A14-030</b> Battery Pack (includes 4x D-cell batteries) <input type="radio"/> <b>NONE</b> No Power Supply Provided – must purchase A14-031 separately***

<b>Additional Parts for Purchase (Purchased Separately)</b>	
<b>Feature</b>	<b>Part Number</b>
*** AC Adapter Splitter Assembly accommodates up to 4 devices when desiring a combination of multiple devices (faucet, soap, & multi-feed soap tank assembly) and/or stations. (Electrical Plug Type B)	A14-031
Multi-Feed Soap Tank Assembly	BD-6-SOAP-MFT

Verify all rough-in dimensions prior to installation.  
 Consult local and national codes. Conformity and compliance to local and national codes is the responsibility of the installer.

### BD-6-3500 - DISTRIBUTEUR DE SAVON - VERGE MODÈLE LINEA

#### CARACTÉRISTIQUES :

##### Distributeurs de savon VERGE - Modèle LINEA :

- Une gamme chef de file d'options de remplissage par le haut avec des réservoirs à grande capacité qui nécessitent moins de remplissage.
- Comprennent un système de capteur intelligent avec indicateurs à DEL qui permet au personnel d'entretien de savoir lorsque les niveaux de savon et de la pile sont bas.
- Les alertes sonores et visuelles aident au processus de remplissage afin d'empêcher de trop remplir et de renverser.
- Un tube supplémentaire de ventilation dans la tige empêche le blocage de l'air, permettant des remplissages plus faciles.
- Options universelles en vrac de savon mousse et liquide.
- Des capteurs, des becs et des joints anti-rotation cachés empêchent le vandalisme.
- Capteurs optimisés pour éliminer les faux actionnements et maximiser la durée de vie de la pile.

##### 6 finitions différentes :

- Chrome poli
- Acier inoxydable brossé
- Nickel brossé
- Laiton brossé
- Bronze brossé
- Acier inoxydable noir brossé

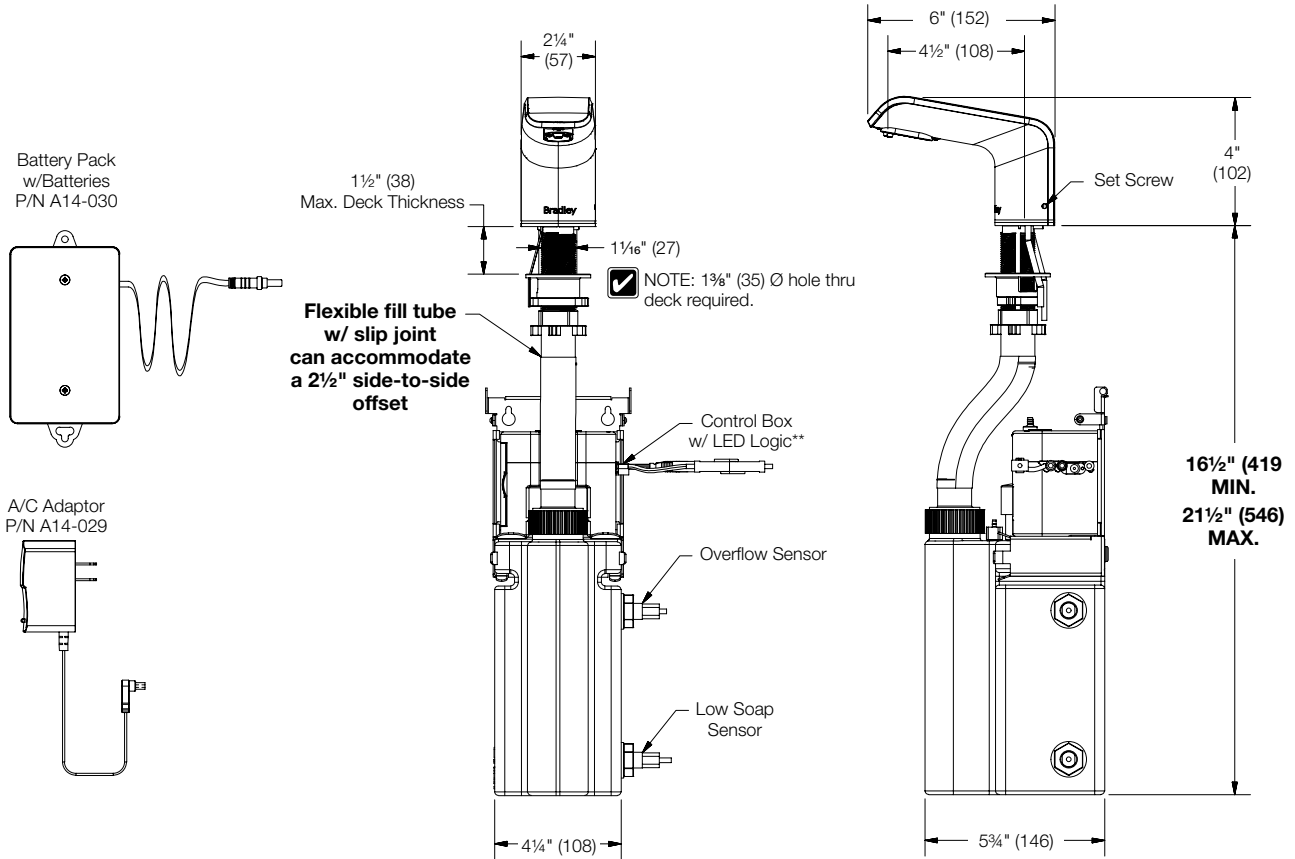


# BD-6-3500 Verge™ Deck-Mounted Soap Dispenser – Linea Series

## Dimensions – Single Top-Fill

(mm)

Note the dimension tolerances (bolded in the illustration below) before installation. Failure to adhere to these tolerances can cause the dispenser to work improperly.



Verify all rough-in dimensions prior to installation. Consult local and national codes. Conformity and compliance to local and national codes is the responsibility of the installer.

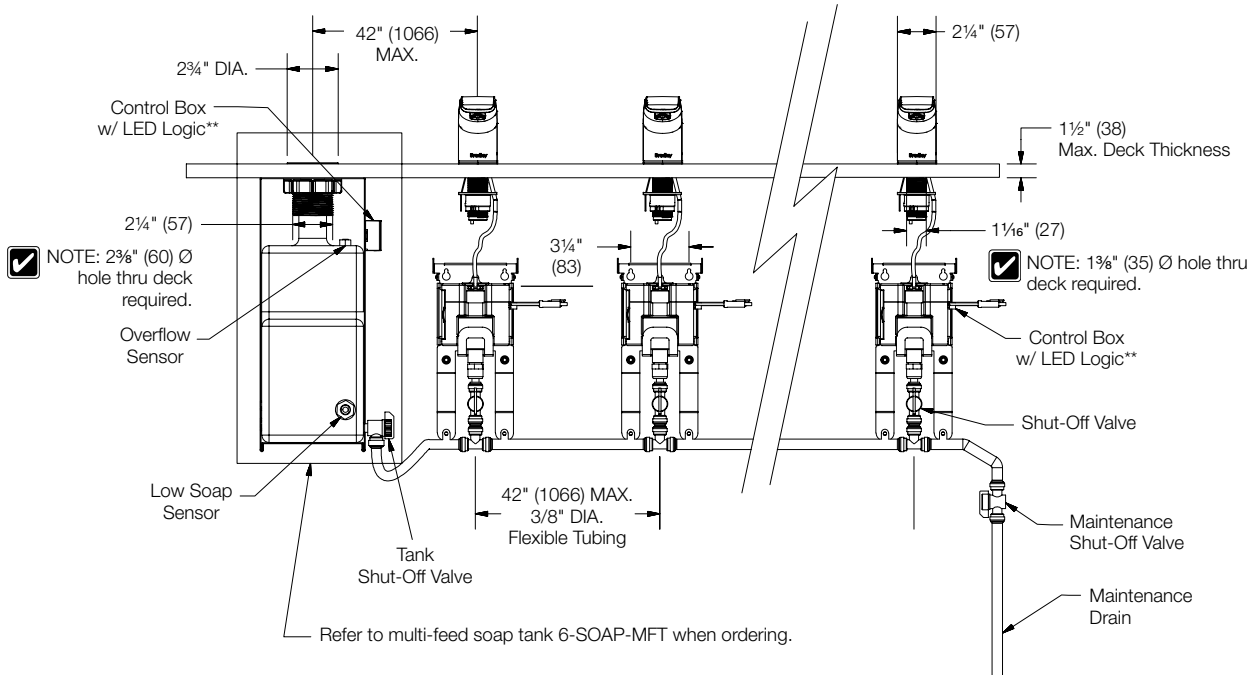
\*\* NOTE: Battery pack or AC adaptor required. AC power source required to be within 54' (1371) of the control box.

Date de révision du document : 11 avril 2023 - Avis de non-responsabilité : Les améliorations continues du produit font que les spécifications peuvent être modifiées sans préavis. Document et photos non contractuelles. April 11, 2023 - Disclaimer: Continued product improvements make specifications subject to change without notice. Non-contractual document.



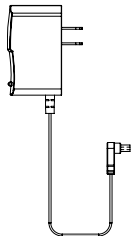
Dimensions – Multi-Feed System - End Tank

(mm)

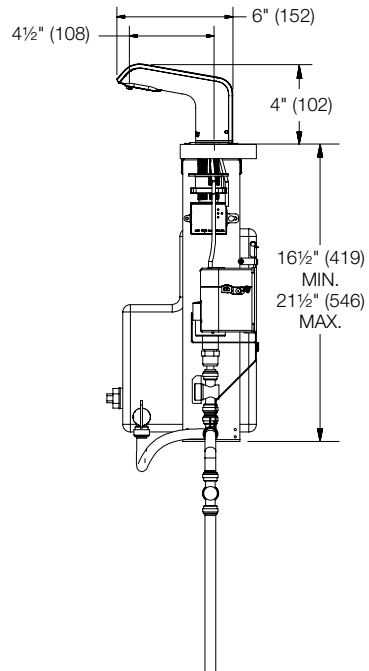
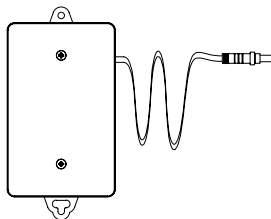


\*\* NOTE: Battery pack or AC adaptor required. AC power source required to be within 54" (1371) of the control box.

A/C Adaptor  
P/N A14-029



Battery Pack  
w/Batteries  
P/N A14-030



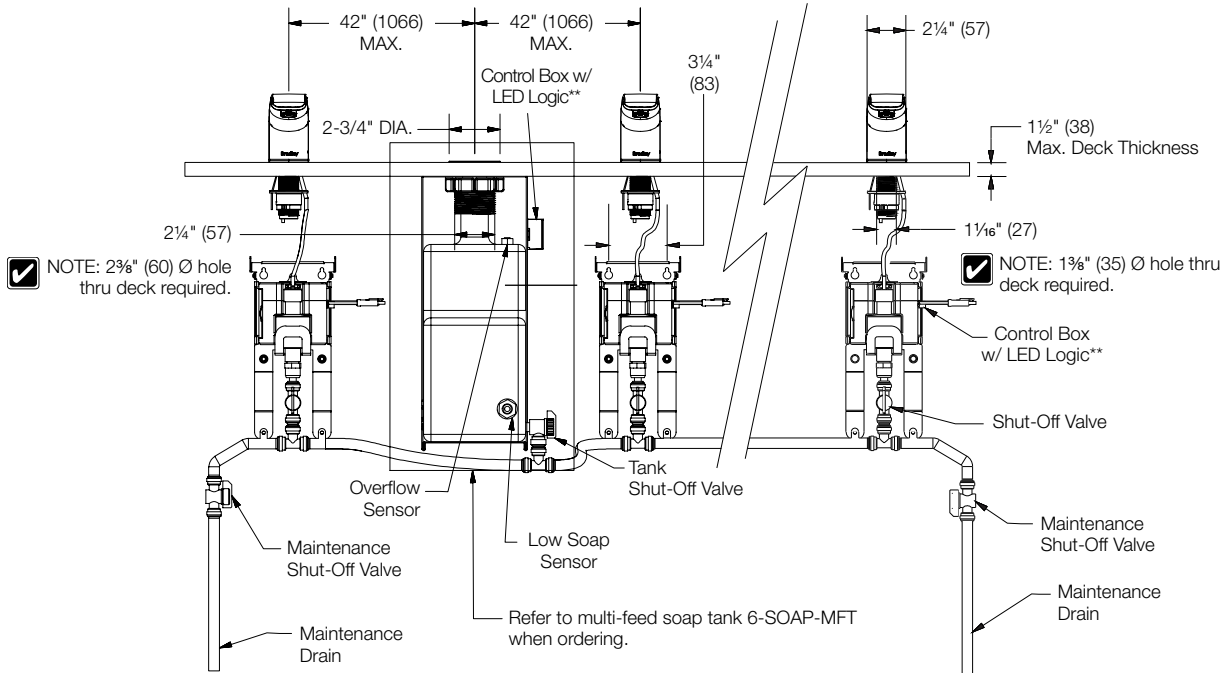
Verify all rough-in dimensions prior to installation.  
Consult local and national codes. Conformity and compliance to local and national codes is the responsibility of the installer.

Date de révision du document : 11 avril 2023 - Avis de non-responsabilité : Les améliorations continues du produit font que les spécifications peuvent être modifiées sans préavis. Document et photos non contractuelles. April 11, 2023 - Disclaimer: Continued product improvements make specifications subject to change without notice. Non-contractual document.



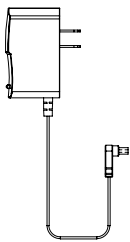
Dimensions – Multi-Feed System - Mid Tank

(mm)

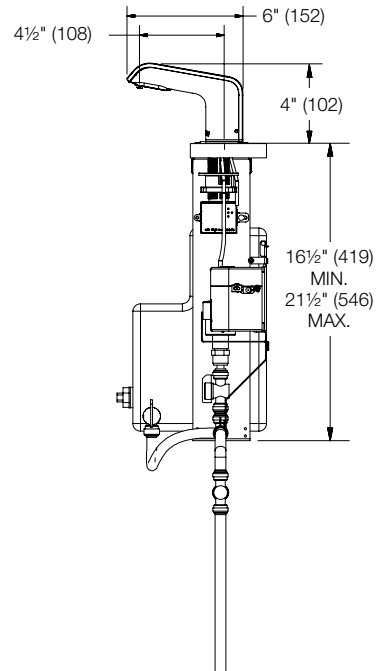
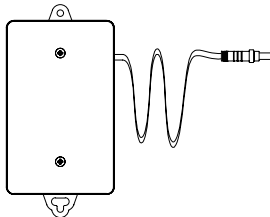


☑ \*\* NOTE: Battery pack or AC adaptor required.  
 AC power source required to be within 54" (1371) of the control box.

A/C Adaptor  
 P/N A14-029



Battery Pack  
 w/Batteries  
 P/N A14-030



Verify all rough-in dimensions prior to installation.  
 Consult local and national codes. Conformity and compliance to local and national codes is the responsibility of the installer.

Date de révision du document : 11 avril 2023 - Avis de non-responsabilité : Les améliorations continues du produit font que les spécifications peuvent être modifiées sans préavis. Document et photos non contractuelles. April 11, 2023 - Disclaimer: Continued product improvements make specifications subject to change without notice. Non-contractual document.