

BOBRICK

Technical Data

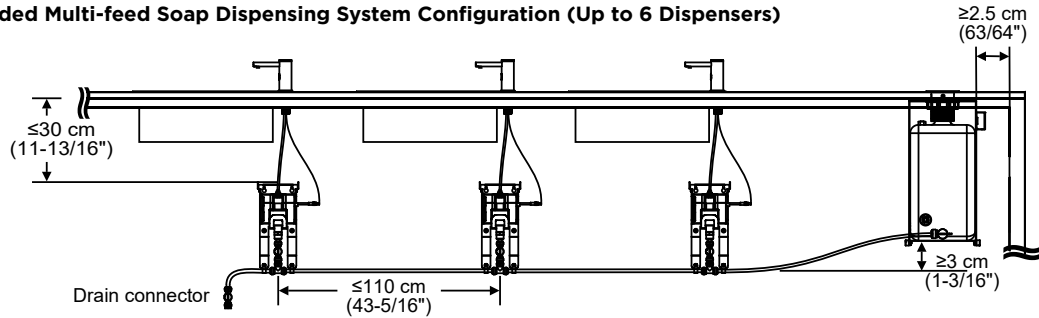
AUTOMATIC, MULTI-FEED SOAP DISPENSING SYSTEM

B-820
(Multi-Feed Soap Reservoir)

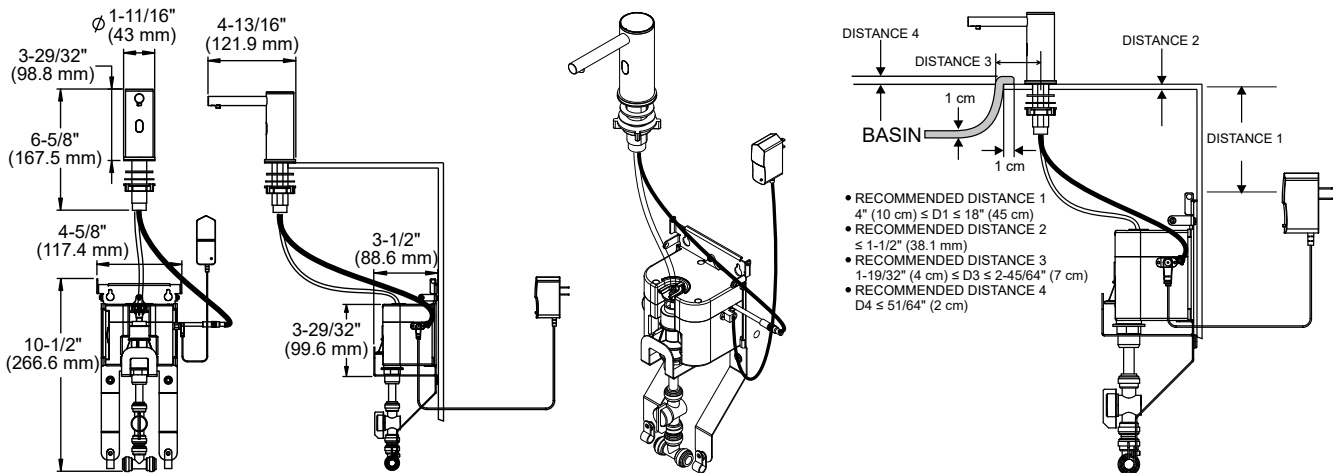
B-820-258
(Liquid Soap Dispenser)

B-820-248
(Foam Soap Dispenser)

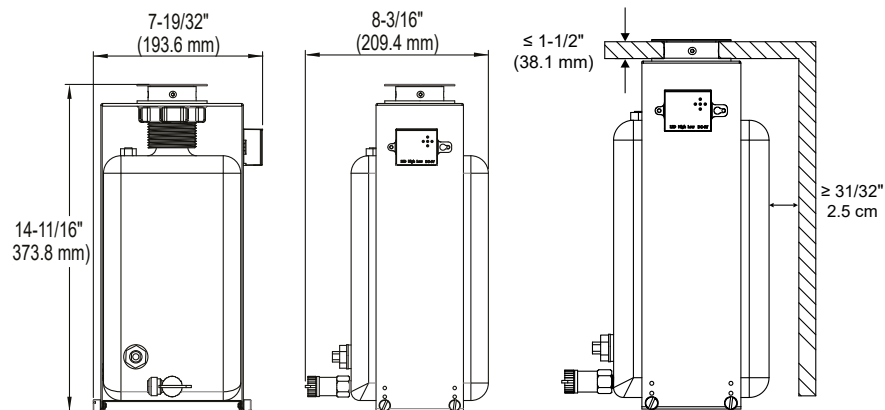
Recommended Multi-feed Soap Dispensing System Configuration (Up to 6 Dispensers)



B-820-258 (Liquid Soap Dispenser) / B-820-248 (Foam Soap Dispenser)



B-820 (Multi-Feed Soap Reservoir)



© 2022 by Bobrick Washroom Equipment, Inc.



MATERIALS:

Multi-Feed Soap Reservoir — Polypropylene tank with a capacity of 1.6 gal (6.0 L). Includes a counter-mounted top-fill port with LED indicator and cap installed directly above the soap reservoir tank and an electronic control box on the side.

Soap Dispenser — Above the counter, bright polished 304 stainless steel spout with integral stem. Below the counter, the sensor wire connects to the wall-mounted electronic control box and the soap tube connects to the soap pump. Additional soap tube connects the soap dispensers in-line to the reservoir and dispenser pumps soap through tubing out the spout to dispense.

6V AC Adapter — Powered by 6V AC Adapter that is included with each multi-feed soap reservoir and soap dispenser. Optional Battery Pack available, order Part No. 824-241. Battery Pack uses 4 "D" cell batteries (not included). For outlets not compatible with U.S. plugs, order Part No. 3974-58.

OPERATION:

B-820 large-capacity, multi-feed, top-fill, soap reservoir feeds bulk liquid or foam soap to up to six B-820-258 Automatic Liquid Soap Dispensers or B-820-248 Automatic Foam Soap Dispensers. Soap Dispensers specified and furnished separately from the B-820 Multi-Feed Soap Reservoir. Multi-Feed Soap Reservoir can be mounted to the left or right side of the rear wall, under the countertop. Soap reservoir can be filled with bulk liquid or foam soap that is compatible with the matching liquid or foam soap dispenser.

To fill the soap reservoir from above the counter, use the provided suction cup to lift up the fill port cap and pour the soap using the provided funnel. When the soap level is low (below 25-30%), the LED indicator light will blink green at the top fill port. To prevent overfilling, when the soap reservoir tank is full, the LED indicator light will stop blinking green and a warning alarm will sound for about 15 seconds to signal to stop filling.

To activate the dispenser, place hand below spout in front of the IR sensor. Green LED will light up briefly when dispensing. Spout dispenses 1 to 1.2 ml for liquid soap dispenser and 0.6 to 0.8 ml for foam soap dispenser.

In addition to the B-820 Multi-Feed Soap Reservoir, order the B-820-258 Liquid Soap Dispensers for liquid soap and the B-820-248 Foam Soap Dispensers for foam soap. Dispenses liquid soaps with a viscosity of 1 cP to 3,000 cP (centipoise). Dispenses foam soaps with a viscosity of 1 cP to 50 cP (centipoise).

INSTALLATION:

The top fill soap reservoir is designed for installation into counters up to 1-1/2" (38.1 mm) maximum thickness with 2-3/8" (60.3 mm) diameter mounting hole for the fill port. The horizontal clearance required between the soap reservoir and side wall is 1" (25 mm). Recommended install location for the fill port is at least 5-29/32" (150 mm) from the center of the mounting hole to the side and back wall.

1. Slide the refilling shaft through the hole at the counter. Below the counter, thread mounting bracket onto shaft and secure with nut.
2. Slide the soap reservoir tank into the mounting bracket, ensuring that the refilling shaft and reservoir tank are aligned.
3. Lastly, slide the bottom bracket below the tank, then secure from the sides with four thumb screws.
4. Connect the wires into the soap reservoir control box on the side of the mounting bracket.
5. Plug AC Adapter into wall and end plug into power port on the soap reservoir control box.

The compatible Liquid or Foam Soap Dispenser is designed for installation into counters up to 1-1/2" (38.1 mm) maximum thickness with 1" (25 mm) diameter mounting hole, and compatible with sink rims up to 25/64" (10 mm) wide and 51/64" (20 mm) tall. Recommended spout location is minimum of 1-19/32" (40 mm) and maximum of 2-45/64" (70 mm) from inside edge of the sink rim to the center of the mounting hole, and minimum clearance of 1-3/16" (30 mm) from the edge of the sink and rear wall to the center of the mounting hole.

1. Below the counter, install the pump assembly at the rear wall with the included screws and wall anchors, keeping a minimum of 4" (100mm) and maximum of 18" (450mm) vertical clearance from the bottom of the countertop to the mounting screw location. Provide backing in wall as specified in accordance with local building codes.
2. Plug AC Adapter into wall and end plug into power port on the dispenser pump assembly.
3. Connect the soap tubes from the pump assembly of each compatible B-820-258 Liquid Soap Dispenser or B-820-248 Foam Soap Dispenser to the B-820 Multi-Feed Soap Reservoir per Installation Instructions.

SPECIFICATION:

B-820 large-capacity, multi-feed, top-fill, soap reservoir feeds bulk soap up to six B-820-258 Liquid Soap Dispensers or B-820-248 Foam Soap Dispensers. Soap Dispensers and Multi-Feed Soap Reservoir specified and furnished separately. The top-fill Multi-Feed Soap Reservoir can be mounted to the left or right side of the rear wall, under the countertop. Green LED indicator light flashes at the top fill port when the soap level is below 25% to 30%. To prevent overfilling, when the soap reservoir tank is full, the LED indicator light will stop blinking green and a warning alarm will sound for about 15 seconds to signal to stop filling. Automatic Multi-Feed Soap Dispensing System eliminates frequent refilling of single dispensers, reducing maintenance time and cost.

Compatible Counter-Mounted, Automatic Liquid and Foam Soap Dispensers dispense commercially marketed all-purpose bulk hand soaps. Spout assembly shall be 304 stainless steel with integral stem. Spout shall have LED indicator light to show when unit has been activated. Powered by 6V AC Adapter that is included with each multi-feed soap reservoir and soap dispenser. Optional Battery Pack available, order Part No. 824-241. Battery Pack uses 4 "D" cell batteries (not included). For outlets not compatible with U.S. plugs, order Part No. 3974-58.

© 2022 by Bobrick Washroom Equipment, Inc.

Automatic Multi-Feed Soap Dispensing System

INSTRUCTIONS FOR INSTALLATION, OPERATION, MAINTENANCE & TROUBLESHOOTING

Bobrick B-820-258 (Liquid Soap Dispenser) / B-820-248 (Foam Soap Dispenser) B-820 (Multi-Feed Soap Reservoir)

Clearances and Mounting Requirements:

B-820-258 (Liquid Soap Dispenser) / B-820-248 (Foam Soap Dispenser)

- Designed for installation into countertops up to 1.5" (38.1 mm) thick.
- Requires 1" (25 mm) diameter mounting hole.
- Compatible with sink rims up to 0.39" (10 mm) wide and 0.8" (20 mm) tall.
- Recommended spout location is minimum of 1.6" (40 mm) and maximum of 2.7" (70 mm) from inside edge of the sink rim to the center of the mounting hole, and minimum clearance of 1.18" (30 mm) from the edge of the sink and rear wall to the center of the mounting hole.
- Requires a minimum of 4" (100 mm) and maximum of 18" (450 mm) vertical clearance from the bottom of the countertop to the mounting screw for the soap pump at the rear wall.

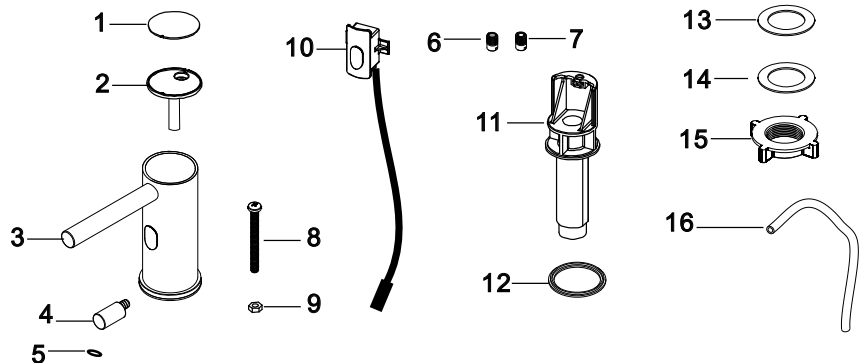
B-820 (Multi-Feed Soap Reservoir)

- Designed for installation into countertops up to 1.5" (38.1 mm) thick.
- Requires 2.38" (60.3 mm) diameter mounting hole.
- Recommended install location for the fill port is at least 5.91" (150 mm) from the center of the mounting hole to the side and back wall.
- The horizontal clearance required between the soap reservoir and side wall is 1" (25mm)

Unit Diagram

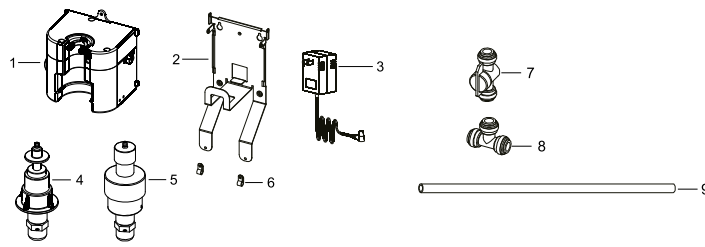
B-820-258 (Liquid Soap Dispenser) / B-820-248 (Foam Soap Dispenser) - Spout with Stem Assembly

1. Plate
2. Top Cover
3. Dispenser Spout
4. Elbow Connector
5. O Ring
6. Nozzle with Mesh
7. Nozzle without Mesh
8. Screw
9. Screw Nut
10. CSD Sensor
11. CSD Mounting shaft
12. Rubber Washer (Above Countertop)
13. Rubber Washer (Below Countertop)
14. Nylon Washer
15. Mounting Nut
16. Soap Tube



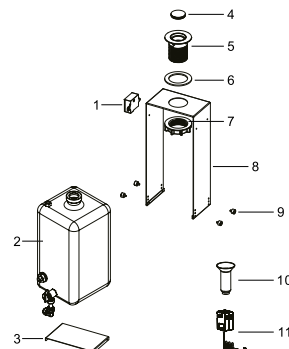
B-820-258 (Liquid Soap Dispenser) / B-820-248 (Foam Soap Dispenser) - Pump with Electronic Control Box

1. Control Box
2. Base Plate
3. AC Adapter
4. Soap Pump (Liquid)
5. Soap Pump (Foam)
6. Soap Tube Holder (Two included)
7. Soap Tube Valve Switch
8. Soap Tube T Connector
9. Soap Tube (1,200 mm)



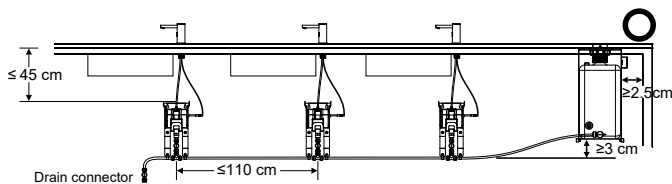
B-820 (Multi-Feed Soap Reservoir)

1. Control Box
2. Soap Reservoir Tank
3. Bottom Bracket
4. Fill Port Cap
5. Refilling Assembly
6. Rubber Washer
7. Mounting Nut
8. Bracket
9. Thumb Screws (Four included)
10. Funnel
11. AC Adapter

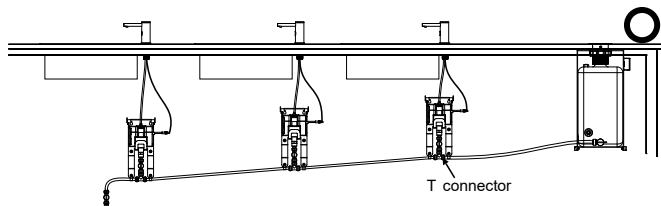


Recommendation on Tubing Configuration

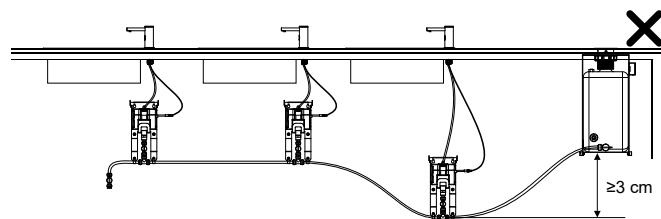
- The soap tube connectors from soap pumps should be no higher than that of the soap reservoir tank.
- Recommended tubing distance between each soap pump should be no longer than 43.31" (1,100 mm).
- The vertical slack of the tubing running from the soap reservoir tank to the nearest soap pump should be at least 1.18" (30 mm).
- Keep all soap pumps at the same height so that the soap tubes between units are leveled.



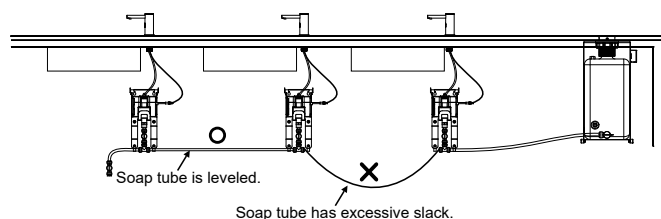
- If each soap pump cannot be at the same height, the soap pump farthest from the soap reservoir tank should be the lowest in height. For the soap pumps in between the farthest soap pump and soap reservoir tank, the closer the soap pump is to the soap reservoir tank, the higher its installation location should be, while remaining in the recommended vertical clearance specified in the Clearances and Mounting Requirements section.



- The soap pump in between the farthest soap pump and soap reservoir tank should not be lower than the neighboring soap pumps.

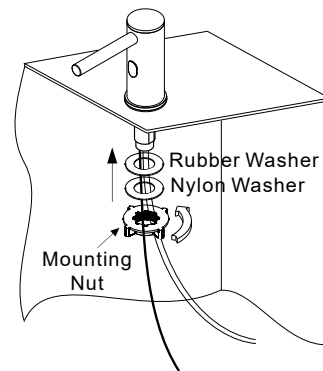


- Cut the soap tubing to the shortest length between units to ensure that it has minimal slack.

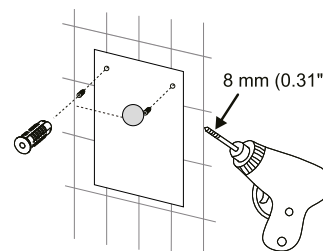


Installation for B-820-258 (Liquid Soap Dispenser) / B-820-248 (Foam Soap Dispenser)

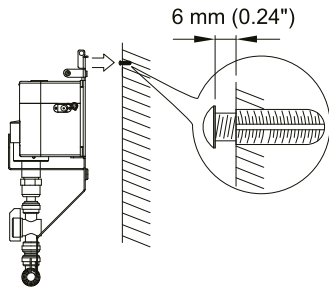
- Drill 1" diameter mounting hole per recommended Clearances and Mounting Requirements stated above.
- Place the above countertop rubber washer over mounting hole to align with profile of the dispenser.
- Insert the stem, tube and cable of the top assembly carefully through the mounting hole.
- Under the counter, first slide the below counter rubber washer and nylon washer through the stem, tube and cable of the top assembly. Then, screw the mounting nut into the threaded stem to secure the assembly.



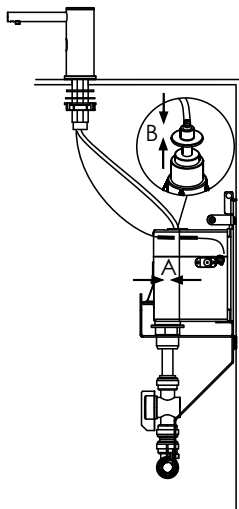
- Use the Wall-Mounting Template to determine the best installation location on the rear wall based on the reach of soap tube. The vertical clearance from the bottom of the countertop to the mounting screw for the soap pump at the rear wall should be a minimum of 4" (100 mm) and maximum of 18" (450 mm). Then, tape the Wall-Mounting Template to the wall, drill two 0.28" (7 mm) holes and insert the wall anchors into the holes. A pack of three (3) 5/32" x 3/4" (4x19 mm) screws and three 8x25 mm plastic wall anchors are provided per soap pump unit.



6. Thread the screws into the wall anchors and leave a space of 0.24" (6 mm) from the bottom of the screw head to the wall to hang the wall-mounting bracket on the control box.

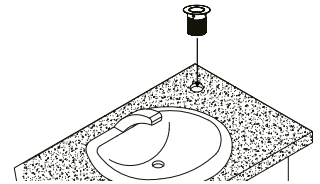


7. Hang the control box on the wall by sliding the keyhole slots on wall-mounting bracket at the back of the control box into the wall screws. Secure both wall screws afterwards.
8. Connect the wires from the dispenser assembly to the wires on the control box assembly (A). Then connect the soap tube from the spout assembly into the connector on the soap pump (B).



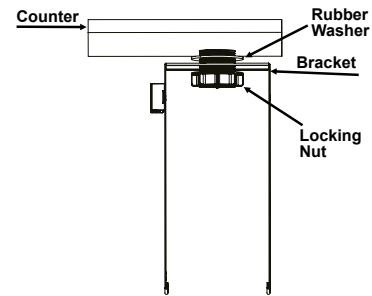
Installation for B-820 (Multi-Feed Soap Reservoir)

1. Drill 2.38" diameter mounting hole per recommended Clearances and Mounting Requirements stated above.
2. Insert the refilling assembly carefully through the mounting hole.

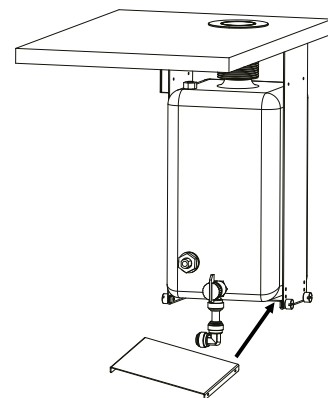


3. Under the counter, slide the rubber pad and bracket through the stem of the refilling assembly first. Then, secure the components together by screwing the locking nut into the threaded stem of the refilling assembly.

Note: Before installing the soap reservoir tank, disconnect the brown and black wire from the electronic control box. Do not pinch or kink any wires.

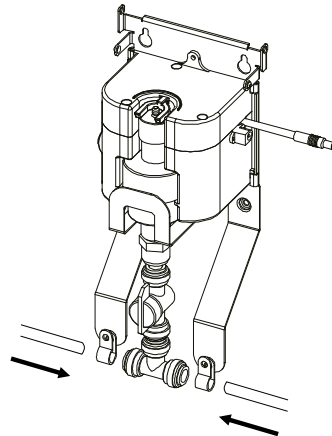


4. Slide the soap reservoir tank into the bracket, ensure the stem of the refilling assembly is aligned with the top opening of the soap tank, and the tank is pushed all the way into the plastic fill port to prevent soap from leaking. Then, slide the lower support bracket below the soap tank and secure the sides with thumb screws.

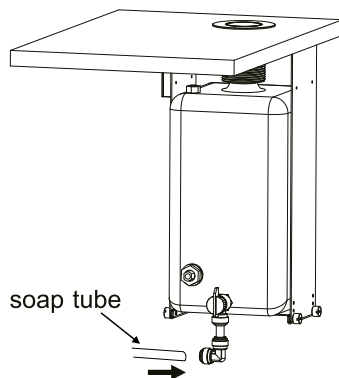


Installation for Tube Connections

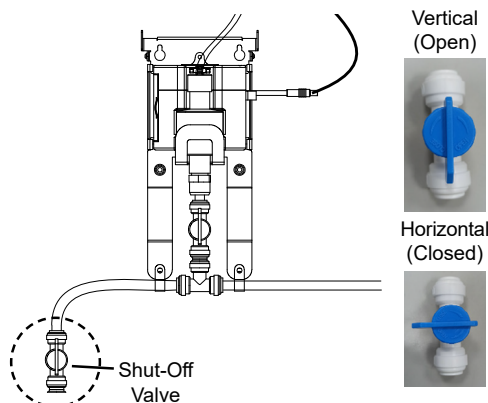
- Using the soap tubes, connect the bottom end of all control boxes together. Cut the tubing to the shortest length between units to ensure that the tubing has minimal slack, while the ends of the tubing fits completely into each T connector.



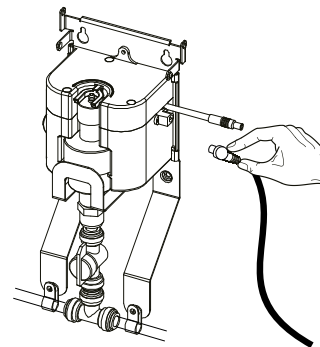
- Connect the soap tube into the valve fitting of soap reservoir tank.



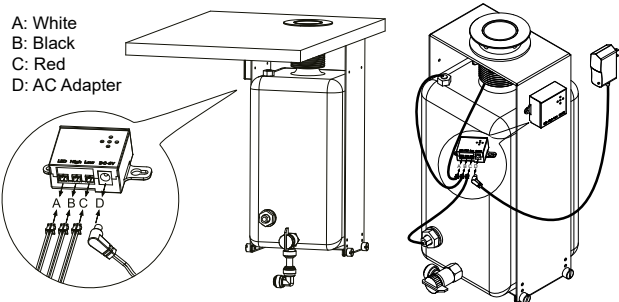
- Connect a shut-off valve switch connector to the tubing at the end of the soap supply system. Make sure that the shut-off valve switch at the end of the multi-feed system is in the horizontal (closed) position. Reference image below currently shows in the vertical (open) position.



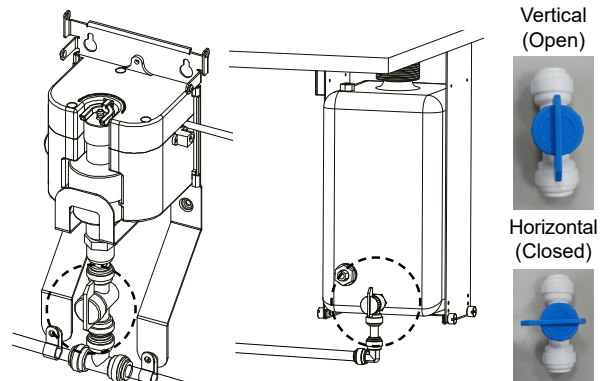
- For each soap dispenser in the system, plug in the AC adapter into the control box.



- For the control box on the soap reservoir tank, follow the diagram below to connect the appropriate wires and AC Adapter.



- Ensure that the valve switches that are directly connected into the control boxes and reservoir tank are in the vertical (open) position.



Fill Instructions:

1. Use the provided Suction Cup to remove the fill port cap.
2. Insert the provided funnel into the fill port, then pour the liquid soap through the funnel.
3. An audible signal will sound for about 15 seconds to indicate sufficient soap level. Stop refilling when the warning is heard. Please ensure to use the correct type of soap that is compatible with the dispenser type purchased with the system. Using the incorrect type of soap may cause performance issues.

To Operate:

Prime Multi-Feed System: Ensure all valve switches on each soap dispenser and on the soap reservoir tank are open to allow soap to flow through the tube and the multi-feed system to prime. For more efficient priming, open the shut-off valve at the end of the system and place end of tube in a container to catch any soap. This will allow the air in the line to be removed and soap to flow faster to each dispenser. Once the soap has reached the shut-off valve, close the valve and remove the container. Then activate the sensor by hand until soap is dispensed on all soap dispensers in the system.

Standard Operation: Place hand below spout in front of the IR sensor to dispense controlled amount of soap.

Routine Cleaning and Maintenance:

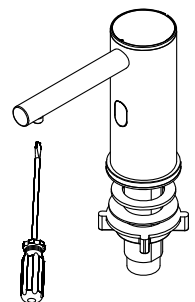
It is recommended to clean the faucet once a week – Wipe the spout above the counter with a soft cleaning cloth. Water or neutral detergent as cleaning solutions would be acceptable. Do not use cleaning solutions that contain acidic, alkaline, corrosive, or abrasive chemicals.

Depending on usage frequency, it is recommended to conduct visual inspection of the soap reservoir tank to check for any impurities or coagulation. To ensure the best performance of the product, remove and clean the soap reservoir tank as needed.

Cleaning the Nozzle (B-820-248 Foam Soap Dispenser Only)

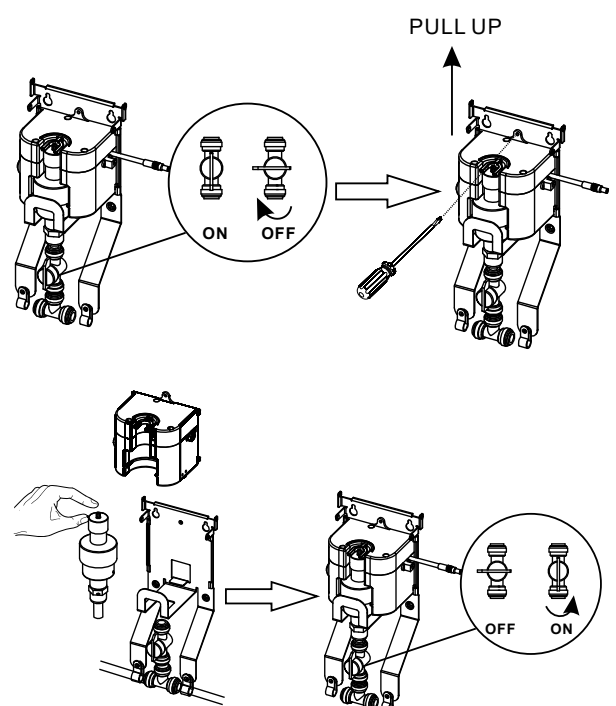
When foam soap volume is reduced, remove the nozzle to clean the mesh screen. It is recommended to clean the nozzle every three months, but may vary depending on usage.

1. Disconnect the power supply from the control box.
2. Use a Phillips screwdriver to unscrew the nozzle from the spout.
3. Rinse the foaming mesh screen and nozzle with water and screw the nozzle back into the spout.



Cleaning the Soap Pump

1. Disconnect the power supply, all cables and tubes from the control box.
2. Turn the valve switch for the soap tubes to the horizontal OFF position.
3. Use a Phillips screwdriver to remove the screw that secures the control box on the base plate. Then, pull the control box upwards to remove the soap tank from the base plate.
4. Pull the soap pump component from the control box.
5. Place the soap pump under running water. Squeeze the soap pump so that water can rinse inside the soap pump.
6. Insert the soap pump back into the control box.
7. Push the control box back into the base plate and secure the Phillips screw at the back.
8. Reconnect the AC adapter plug, all cables, air and soap tubes from the control box and soap tank.
9. Turn the valve switch for the soap tubes to the vertical ON position.





TROUBLESHOOTING GUIDE

B-820 (Multi-Feed Soap Reservoir)

Observed Issue	Recommended Solution
No red LED flashing for about 3 seconds upon initial connection to power.	<ul style="list-style-type: none">Check the AC adapter connection.Check the wire connections on the control box (refer to the Installation Section, Step 5 under Tube Connection for the connection diagram).
LED indicator blinking green.	<ul style="list-style-type: none">Low soap warning, refill soap.
No LED indicator light or audible signal at full soap level.	<ul style="list-style-type: none">Check the AC adapter connection.Check the wire connections on the control box (refer to the Installation Section, Step 5 under Tube Connection for the connection diagram).
Soap leaks at bottom of housing.	<ul style="list-style-type: none">Check if soap reservoir tank is pushed all the way into the plastic fill port/properly seated to prevent soap from leaking at mating connection.Check if soap reservoir tank is damaged / punctured.Check if or soap tube is damaged or not connected properly.

TROUBLESHOOTING GUIDE

B-820-258 (Liquid Soap Dispenser) / B-820-248 (Foam Soap Dispenser)

Observed Issue	Recommended Solution
Unit does not respond at all or has delayed response.	<ul style="list-style-type: none">Check all wire connections from the spout into the control box.Clean and remove any dirt, smudges, or obstructions from the sensor.Check that the AC adapter is plugged into outlet completely.
Unit activates (green LED indicator flashes once), but no soap is dispensed.	<ul style="list-style-type: none">Check soap level in reservoir tank.Check and clean spout nozzle, soap supply tube, and valve pump.Confirm tubing connection.Check if the valve switch that is connected to the dispenser is in the open position.

Date de révision du document : 24 février 2023 - Avis de non-responsabilité : Les améliorations continues du produit font que les spécifications peuvent être modifiées sans préavis. Document et photos non contractuelles.
February 24, 2023 - Disclaimer: Continued product improvements make specifications subject to change without notice. Non-contractual document.